

RoHS

规格书

Client appH

?

1





Description 描述

白光LED由蓝光芯片与荧光粉激发而成



Package Dimensions 封装尺寸

备注

所有标注尺寸单位为毫米





Selection Guide

Electrical / Optical Characteristics at Ta=25 a

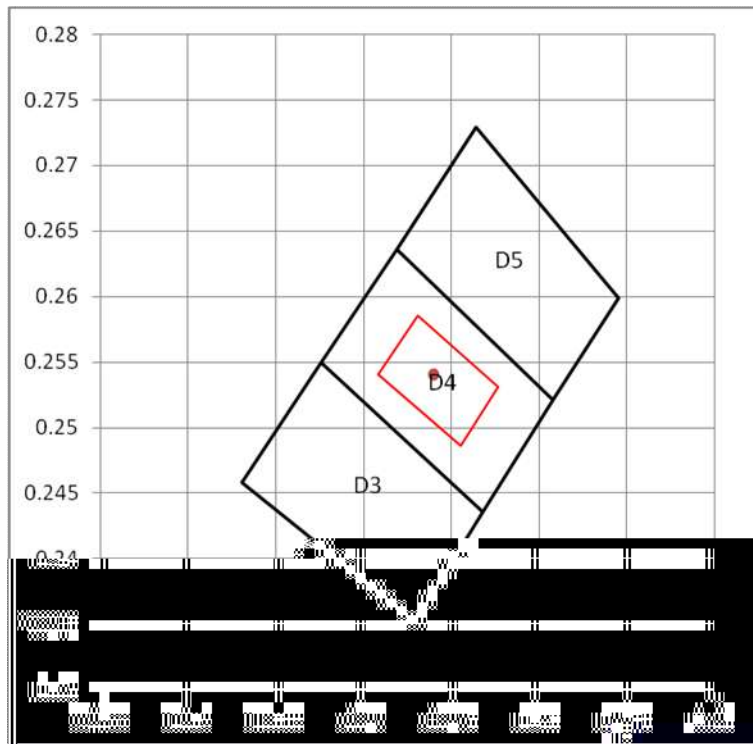


BIN	IV lm
38b	101-103
39a	103-105
39b	105-107
40a	107-109
40b	109-111
41a	111-113
41b	113-115
42a	115-117
42b	117-119
43a	119-121

BIN	VF V
B	2.8-2.9
C	2.9-3.0
D	3.0-3.1
E	3.1-3.2
F	3.2-3.3
G	3.3-3.4
H	3.4-3.5
I	3.5-3.6

BIN	WL
D5	D5
D4	D4
D3	D3

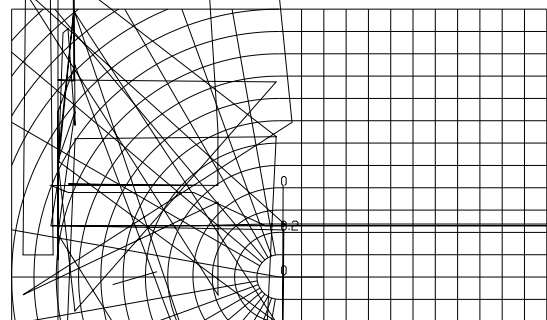
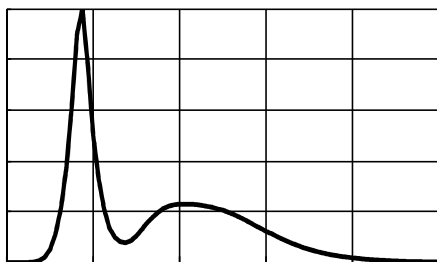
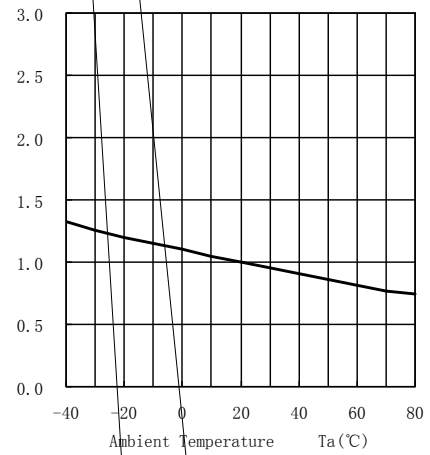
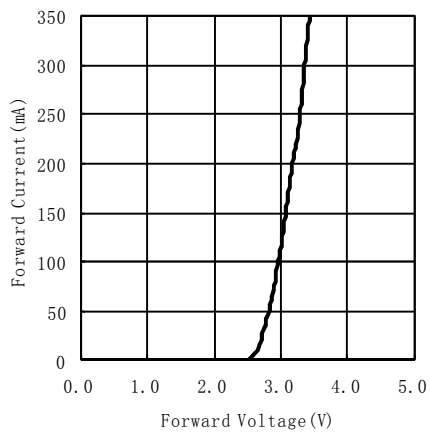
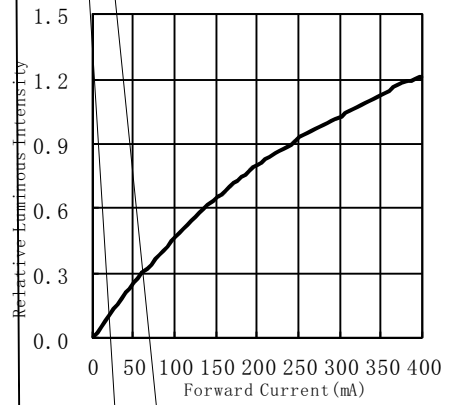
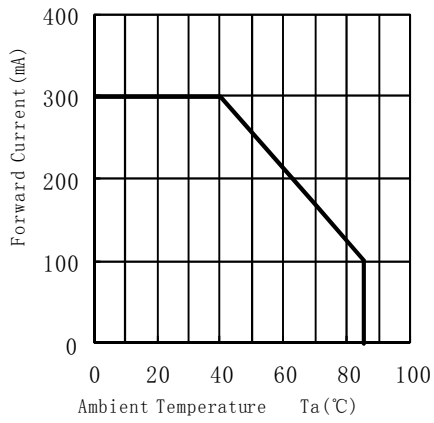
CIE 1931 Chromaticity Diagram : FHDTV

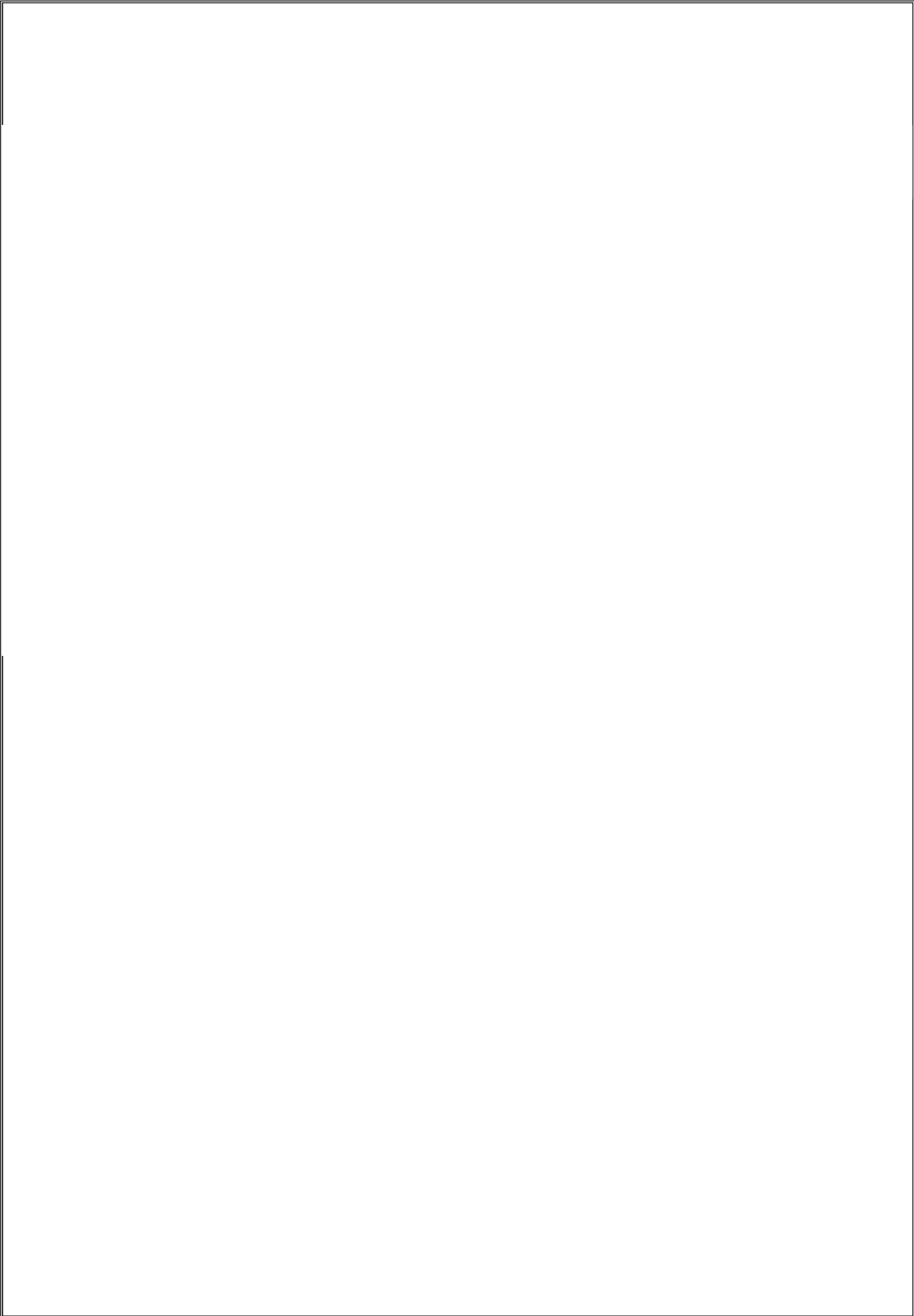


GROUP	Left down		Left up		Right up		Right down	
	X1	Y1	X2	Y2	X3	Y3	X4	Y4
D5	0.2719	0.2636	0.2764	0.2729	0.2845	0.2599	0.2808	0.2521
D4	0.2676	0.2550	0.2719	0.2636	0.2808	0.2521	0.2768	0.2436
D3	0.2631	0.2458	0.2676	0.2550	0.2768	0.2436	0.2729	0.2352



Typical optical characteristics curves







260°C

180-200°C

4"

above 220°C
60 sec.max

over 120 sec





HONGLITRONIC
鸿利光电

