

**TEST REPORT**

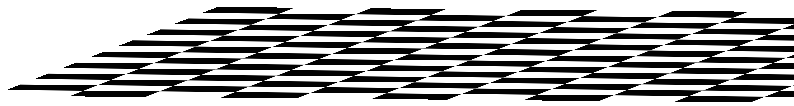
**IEC 62471:2006**

**Photobiological safety of lamps and lamp systems**

*Aror Cheng*

*Richard*

**Note:**







	IN		

FENVA













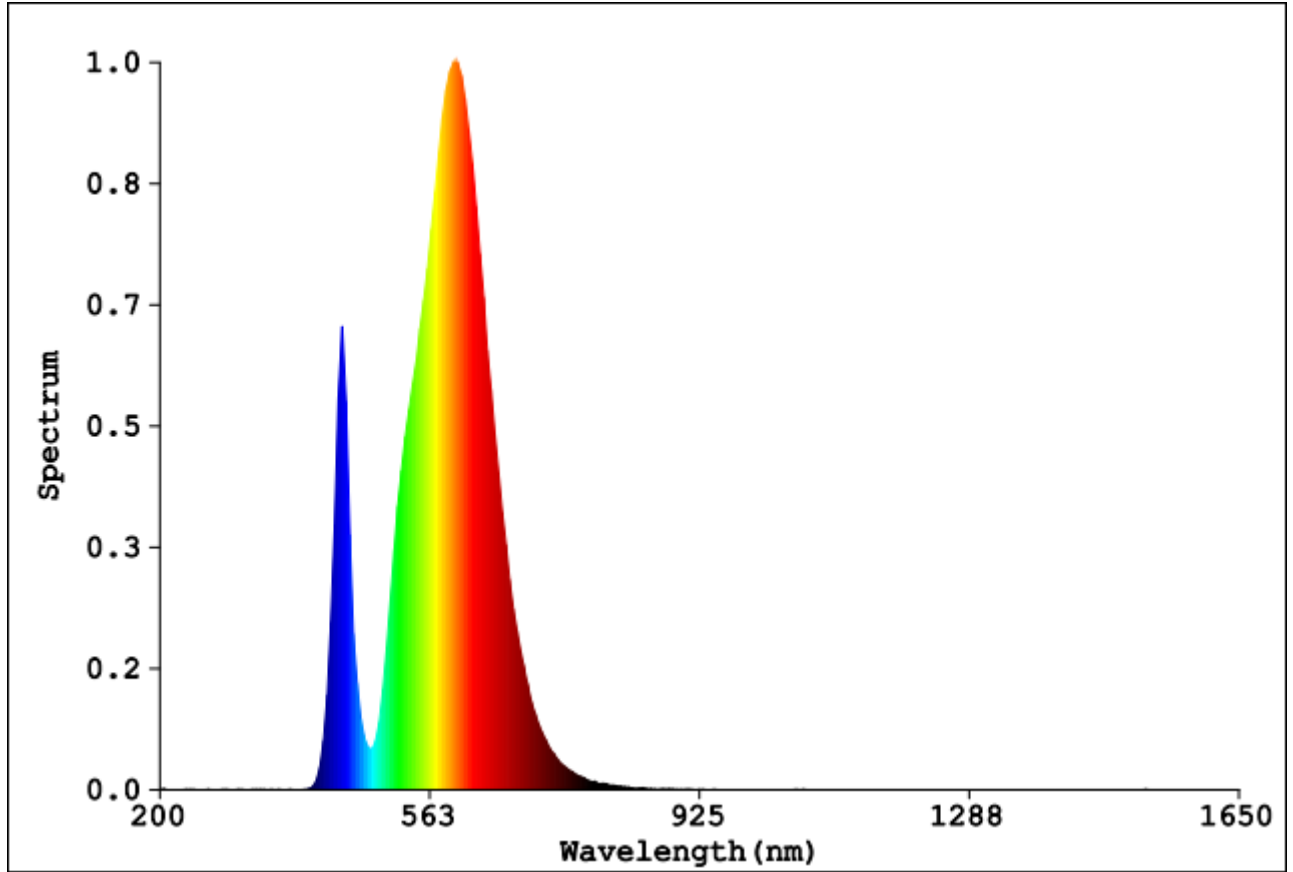



Table 5.4					-
Hazard Name	Relevant equation	Wavelength Range nm	Exposure aperture rad(deg)	Limiting aperture rad(deg)	EL in terms of constant irradiance $W.m^{-2}$
	$\Delta\lambda \sum_{\lambda} \lambda$				
	$\Delta\lambda \sum_{\lambda}$		$\leq$		
	$\Delta\lambda \sum_{\lambda} \lambda$		$\leq$		
	$\sum_{\lambda} \Delta\lambda$		$\leq$		
	$\sum_{\lambda} \Delta\lambda$			$\pi$	

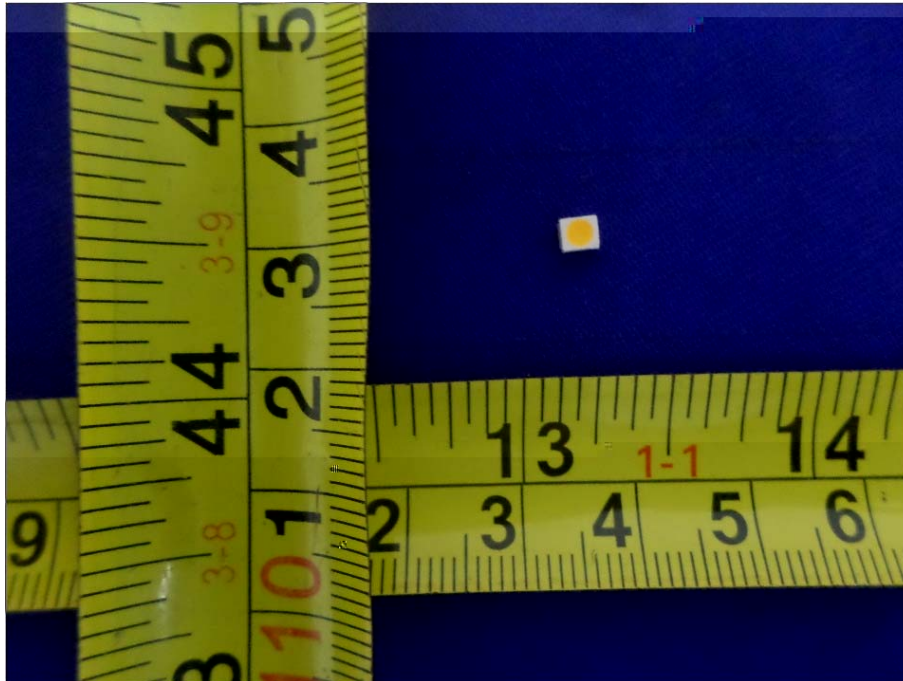
Table 5.5					-
Hazard Name	Relevant equation	Wavelength Range nm	Exposure duration Sec	Field of view radians	EL in terms of constant radiance $W.m^{-2}.sr^{-1}$
	$\Delta\lambda \sum_{\lambda} \lambda$		$\geq$	$\sqrt{\quad}$ $\sqrt{\quad}$	
	$\Delta\lambda \sum_{\lambda} \lambda$			$\sqrt{\quad}$	$\alpha$ $\alpha$
	$\Delta\lambda \sum_{\lambda} \lambda$				$\alpha$


	λ								
	λ								
	λ				-				
	λ			α		α		α	
				α		α		α	
	λ			α	α		α	α	
				α		α		α	

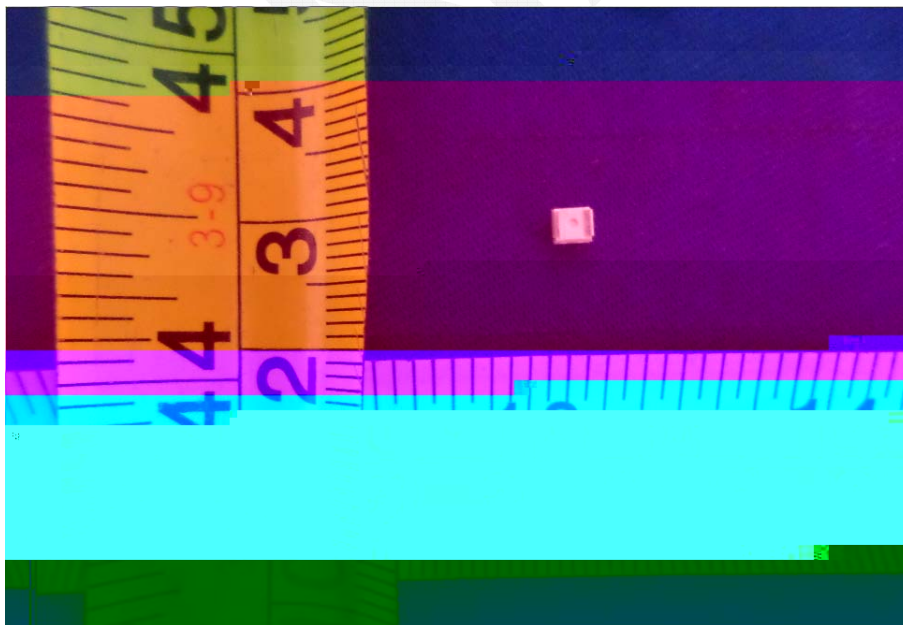
Spectral distribution



The top view of EUT



The bottom view of EUT





—

Equipment Description	Model No	BACL#	Manufacturer	Last Cal	Cal Due

\*\*\* End of report \*\*\*